

CIBOLO PARKWAY



NEWSLETTER EDITION 1 | FALL 2017

CIBOLO PARKWAY PROJECT OVERVIEW

It is an exciting time in Cibolo! Over the last few years, the Cibolo population has reached an all-time high, and growth is not expected to slow down anytime soon. In fact, in August 2015 the San Antonio Express-News named Cibolo as the fastest growing San Antonio suburb with an expected population of 37,000 by 2020. That is a lot of people coming into our city.

On top of the population boom, Cibolo is also seeing development on the horizon with projects like the Cibolo Sports Complex and the Santikos theater and entertainment complex. Projects and development like this will bring an influx of traffic to the city's already congested roads. With most of this growth centered near and around FM 1103, the City decided there was a need to improve infrastructure immediately. This need was also identified by Cibolo residents in the 2006 and 2016 Comprehensive Master Plans.

City leaders have worked diligently to address the growing traffic demands. The Cibolo Parkway project will do just that and will produce increased mobility by providing a true north-south connection from I-35 to I-10.

Currently in the pre-development phase (more information on page 3), the Cibolo Parkway project will include a four-lane roadway from FM 1103 at Weil and Brite roads to I-10 at Zuehl Road.

This new roadway will bring numerous benefits to the area and address multiple safety and flooding concerns.

One of the main improvements will be the construction of a bridge over FM 78 and the railroad. This will provide crossover access for school buses, first responders, and emergency medical services, which will increase safety for those living south of FM 78.

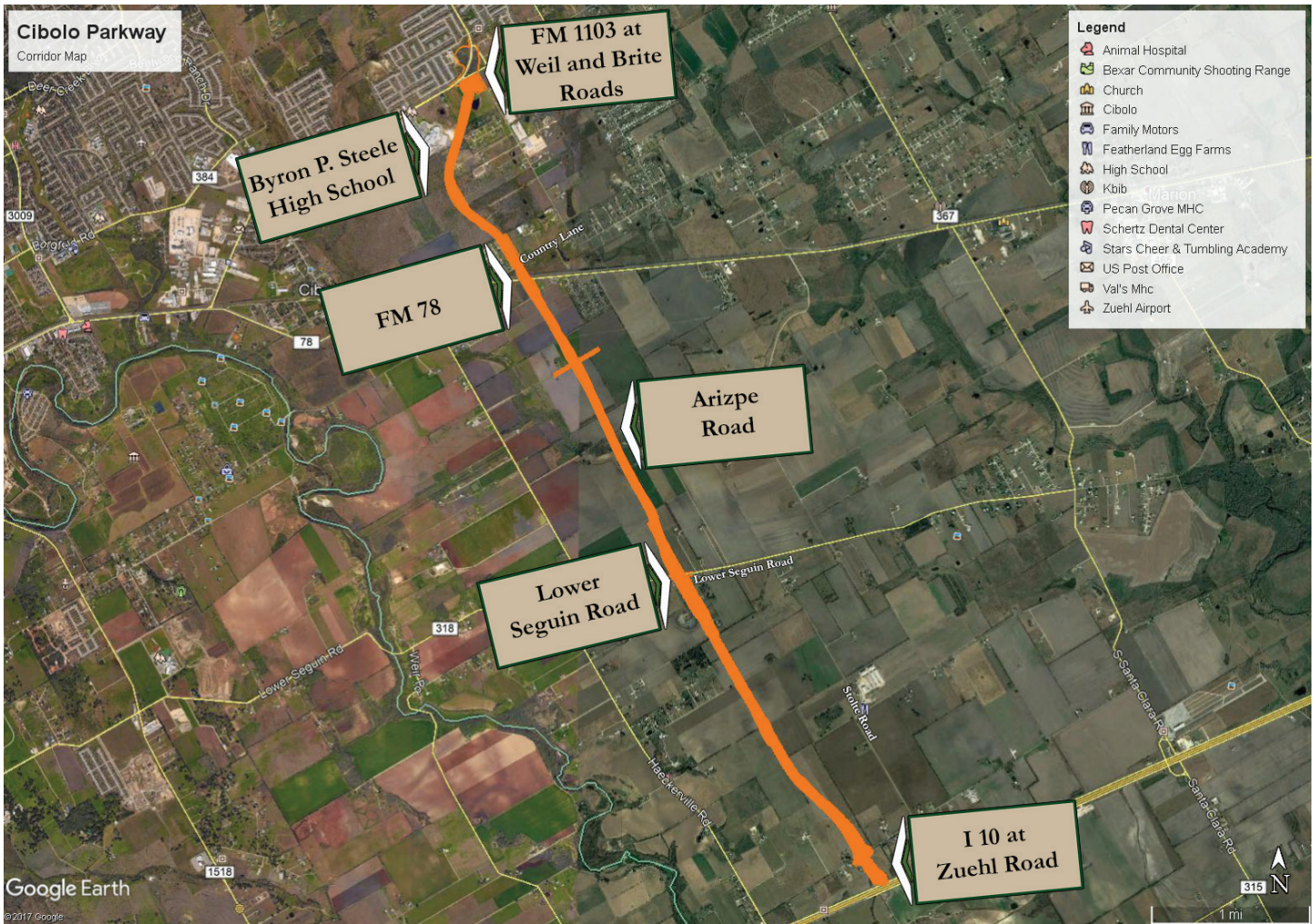
In addition to providing increased safety, construction of the roadway will also address some of the drainage issues of the flood plain areas along the corridor.

The Cibolo Parkway will be a completely new roadway and will provide additional routes for residents and visitors of our city. The parkway will allow visiting motorists to access points of interest without hindering our residential streets and county roads.

IN THIS ISSUE

Cibolo Project Overview	1
Corridor Map	2
Project Benefits	2
Project Timeline	3
Public Meeting	4
Connect With Us	4

CIBOLO PARKWAY CORRIDOR MAP



The Cibolo Parkway project will include a four-lane roadway from FM 1103 at Weil and Brite roads to I-10 at Zuehl Road, providing a true north-south connection from I-35 to I-10.

PROJECT BENEFITS TO CIBOLO

The Cibolo Parkway project will decrease traffic congestion and improve safety for Cibolo, as well as help address current and future mobility needs. Some additional benefits include:

- Address mobility concerns of Cibolo residents from the 2006 and 2016 Comprehensive Master Plans
- Improve the city's transportation infrastructure system
- Provide an immediate funding source for traffic improvements and increased mobility
- Improve emergency response vehicle access and response times south of FM 78
- Reduce congestion and decrease commute time for thousands of residents
- Encourage residential and commercial development south of FM 78, increasing city and school district tax base

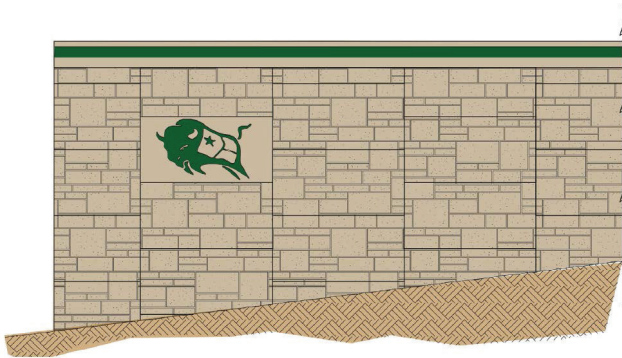
CIBOLO PARKWAY PROJECT BEGINS PRE-DEVELOPMENT STAGE STUDIES AND SURVEYS

Currently the project is in the pre-development phase. This phase includes an environmental assessment, traffic and revenue studies, surveying, and preliminary design. The goal of this phase is to determine if the project is financially and environmentally feasible. Upon the completion of the pre-development phase, which is expected to be in spring of 2018, an estimated budget for the project will be established.

If the pre-development phase determines that the project should advance, the project team will move forward with financing and final design. As these milestones are met, construction is expected to begin in the fall of 2018.



Rendering of the Cibolo Parkway bridge over the railroad tracks near FM 78. The design is subject to change.



The Cibolo Parkway will contain design features unique to this project. The design is subject to change.

PROJECT TIMELINE

PHASE I

Phase I of the project consists of conducting studies including a traffic and revenue study, preliminary design and environmental analysis.

PRE-DEVELOPMENT

Summer 2017 - Spring 2018



PROJECT FINANCING

Spring 2018 - Summer 2018



PHASE II

Phase II of the project will consist of a final design, procurement, and the construction of the parkway.

FINAL DESIGN

Spring 2018 - Summer 2018



PROCUREMENT

Summer 2018 - Fall 2018



CONSTRUCTION

Fall 2018 - Spring 2021
(Estimated 30 months for completion)

*Subject to changes

OPEN HOUSE PUBLIC MEETING

Cibolo Parkway will host the next project open house public meeting to update Cibolo residents on the status of the project.

DATE ➤ **Tues., Jan. 30, 2017**

TIME ➤ **6:45-8 p.m.**

LOCATION ➤ **Cibolo Valley Elementary School - Cafeteria
4093 Green Valley Rd. Cibolo, TX 78108**



Residents study a proposed corridor map for the Cibolo Parkway at a July 2017 Cibolo City Council meeting.



At the August 2017 public update meeting, the environmental studies that will be conducted during the pre-development phase were presented.



WEBSITE

www.CiboloParkway.org



PROJECT PHONE LINE

210-384-2007

CONNECT WITH US



PROJECT EMAIL

info@CiboloParkway.org



FACEBOOK

[@CiboloParkwayProject](https://www.facebook.com/CiboloParkwayProject)